



Contents lists available at [ScienceDirect](http://www.sciencedirect.com)

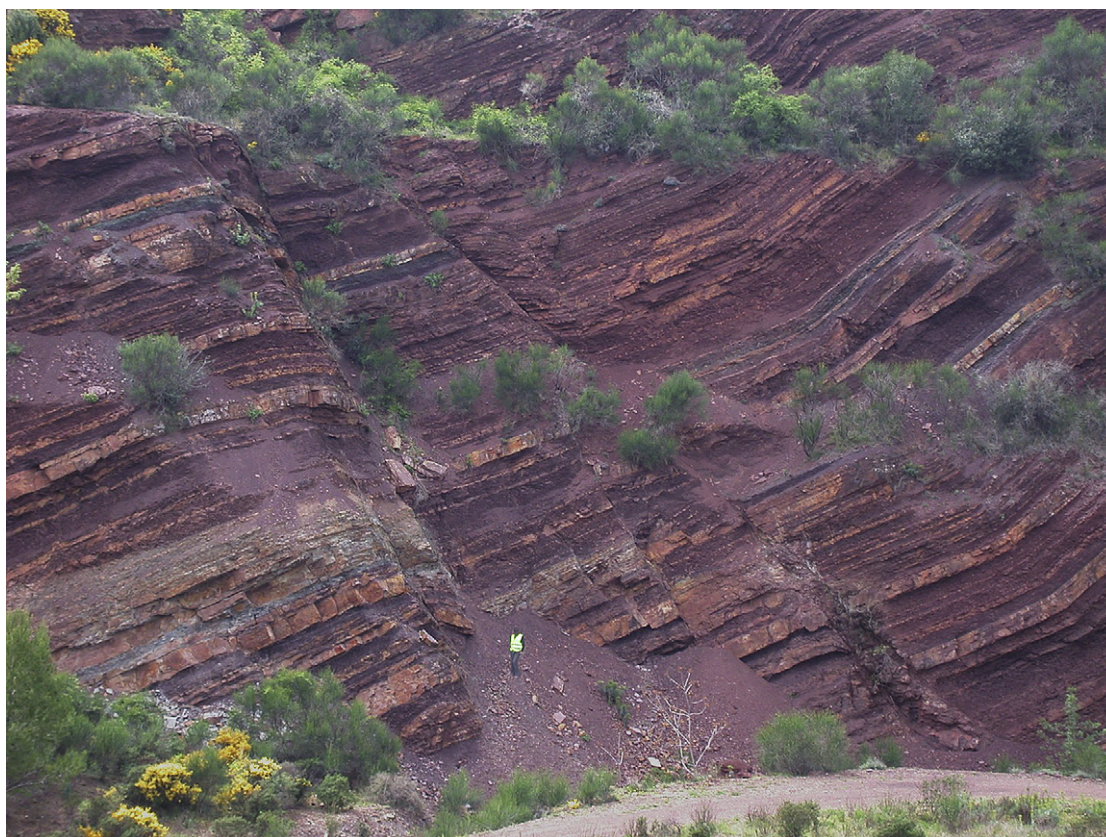
Journal of Structural Geology

journal homepage: www.elsevier.com/locate/jsg



Photograph of the Month

JSG special issue “Fault Zones” – Photo of the month



The St. Jean – Mas d'Alary fault system in the Permian Lodève Basin, S. France may be viewed as a zone of faults at the outcrop/field scale, or a fault zone at the map/satellite photo scale. Complexity in the system is established from the role of reactivating basement (Hercynian) heterogeneities during Permian extension and the tilting of the Lower Permian strata as faulting proceeded, causing some fault segments to die and new ones to form (Wibberley et al., *Journal of the Geological Society*, 2007). Activity of different segments at different times during the evolution of the system, along with the strongly heterogeneous mechanical stratigraphy, encouraged the development of a variety of fault

zone structures such as lenses, fault-propagation folds and relay zones (Van der Zee et al., *Geol. Soc. Lond. Spec. Pub.* 299, 2008).

C.A.J. Wibberley*
TOTAL, CSTJF, Av. Larribau, Pau, France
* Tel.: +33 559 83 57 93; fax: +33 559 83 56 15.
E-mail address: christopher.wibberley@total.com.

27 October 2010
Available online 18 November 2010